

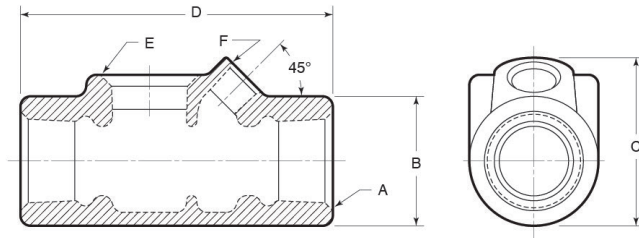
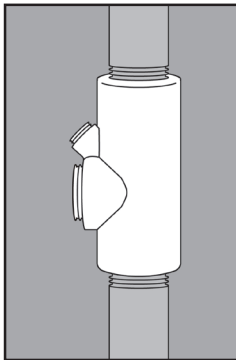
STAINLESS STEEL- HAZARDOUS LOCATION FITTINGS

EYS SEALING FITTINGS



APPLICATION

- Also known as seal offs
- Used in hazardous area locations
- Help to "seal off" and prevent vapors, gases, etc. from passing from one section of a conduit system to another
- Can be used for horizontal or vertical applications
- Manufactured in stainless steel to help prevent corrosion
- Can be installed using ordinary hand tools and require little maintenance or repair
- Provided in a bright, polished finish that does not require touch up or painting



PRODUCT DETAILS

Material:

- Body: CF8M (316 SS)
- Plug: 316 SS

Standards:

ASTM A351

Country of Origin:

Manufactured in USA

Part Number	Conduit Size	Weight/ Each (lbs.)	Dimension (in.)					
			A	B	C	D	E	F
EYS75	¾ in.	1	¾-14 NPT	1.50	1.95	3.63	¾-14 NPT	¼-14 NPT
EYS100	1 in.	2	1-11-½ NPT	1.75	2.20	4.25	1-11-½ NPT	¼-18 NPT

